



G3 MALL

Dream, Believe, Passion





G3

DISCOVER MORE

**DISCOVERY CONSISTS OF SEEING
WHAT EVERYONE ELSE HAS SEEN
& THINKING WHAT NO ONE ELSE
HAS THOUGHT**



ABOUT UNITED

HOME IS WHERE OUR
STORY BEGINS





We Sure that you are searching
about opportunities and luxury
if that what actually you think about it
congratulation now you are our client
United development chose G3 to be
our new challenge



OUR VISION

**YOUR VISION IS OUR
MISSION**



G3 DESIGN

THERE ARE TWO TYPES OF DESIGNS ONE OF THEM CONCENTRATES ON THE EXTERIOR APPEARANCE ONLY, BUT OVER YEARS WILL BECOME OLD DESIGN WHATEVER IT WAS INNOVATIVE, AND THE OTHER TYPE CONCENTRATE ON SELECTING FINEST MATERIALS, BUT UNITED CHANGED THE RULES OF GAME IT WAS OUR CHALLENGE HOW THE ARCHITECTURAL DESIGN COMBINED THE MAGNIFICENT DESIGN AND UNIQUE MATERIALS TO SATISFY ALL CUSTOMER'S DREAMS AND HER LADIES AND GENTLEMEN G3 DESIGN APPEARED .

G3 IS DESIGNED TO A HIGH LEVEL OF FINISHES AND FINEST MATERIALS EXTERIOR DESIGN OF BLUE CRYSTAL, U SHAPED AND ABOUT OUR OUTDOOR PLAZA IT'S UNFORGETTABLE .



ABOUT G3

- Land area: 3000 m².
- Nine floors divided into units with different spaces starting from 55 m² up to 136 m².
- Number of commercial unites 31.
- Number of administrative unites 40.
- Number of medical unites 88.
- Three basement floors up to 270 cars.
- Both the administration and medical unites with different entrances to insure complete privacy for them.
- Commercial area contains (shops, retail, pharmacy, banking, restaurants).





G3 LOCATION

- OVERLOOKING THE MAIN ROAD WHICH IS CROSSING THE WHOLE NEW CAPITAL (AL AMAL AXIS).
- LOCATED IN MU 23 NEXT TO COMMERCIAL AND ADMIN AREA BETWEEN R2 AND R3 ZONE THAT UP 75% OF THE CONSTRUCTION HAS BEEN COMPLETED AND WILL BE THE FIRST DELIVERED BUILDINGS IN THE NEW CAPITAL .





G3



ZONE ADVANTAGE

- DIRECTLY ON TWO MAIN STREETS (120 MW AND 90 MW) .
- IN FRONT OF THE FIRST RESIDENTIAL AREA THAT UP75% OF THE CONSTRUCTION HAS BEEN COMPLETED WITH A TOTAL POPULATION OF 50,000 .
- IT IS DIRECTLY LOCATED ON A 100 –METER WIDE MAIN AXIS LINKING SUEZ ROAD TO THE GREEN RIVER .
- CLOSE TO OLYMPIC VILLAGE, TALLEST TOWER IN AFRICA, NEW CAPITAL INTERNATIONAL AIRPORT, EMBASSIES AREA AND EL MASA HOTEL .
- MINUTES FROM NEW CAIRO& 8 MINUTES FROM SOKHNA ROAD 8 .



خدمي ترفيهي

المدينة الرياضية

R 2
Residential

R 3
Residential

G 3

G 1

G 2

G 3

G 4

G 5

G 10

G 11

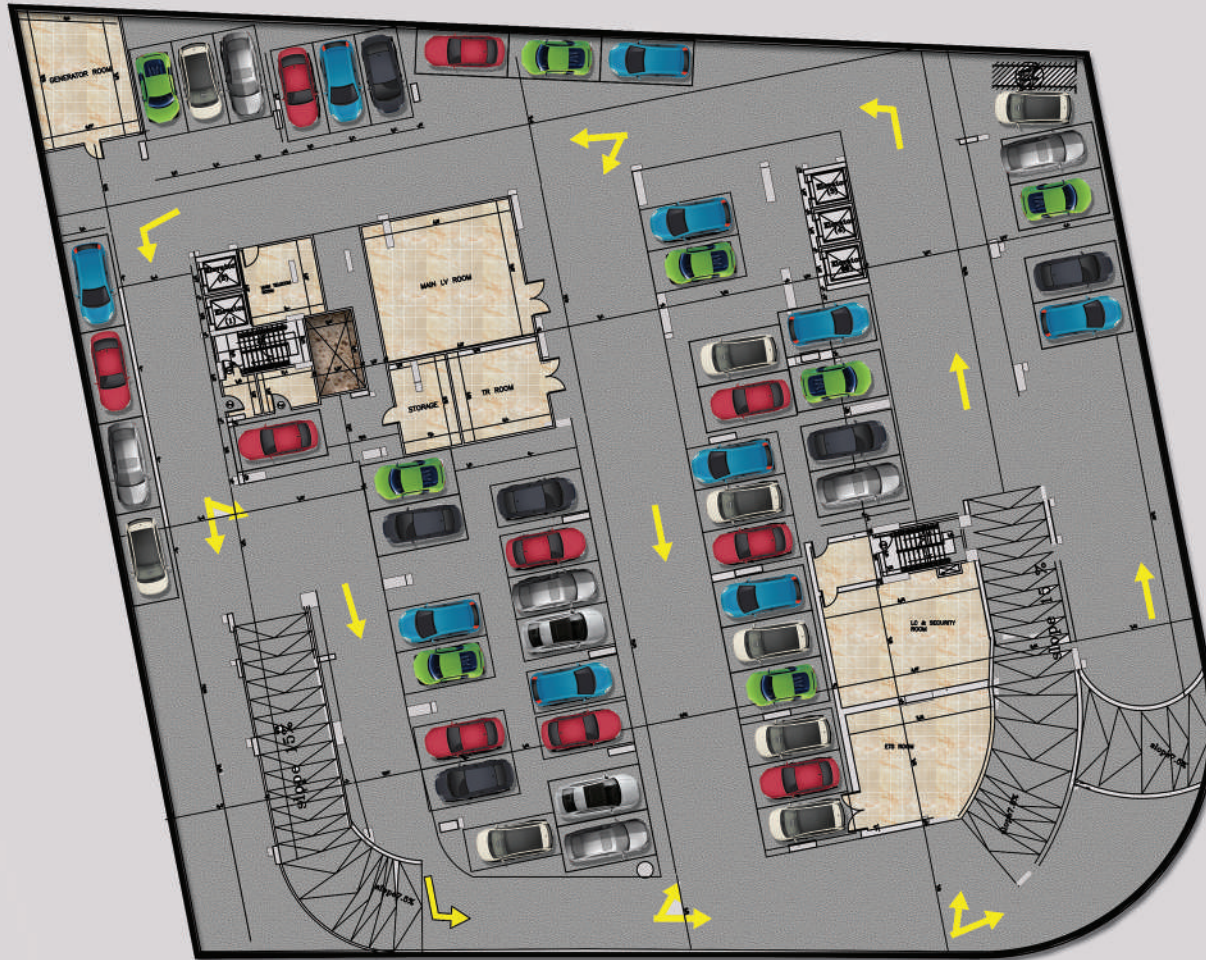
G 12

محور الأمل

منطقة المال و الأعمال



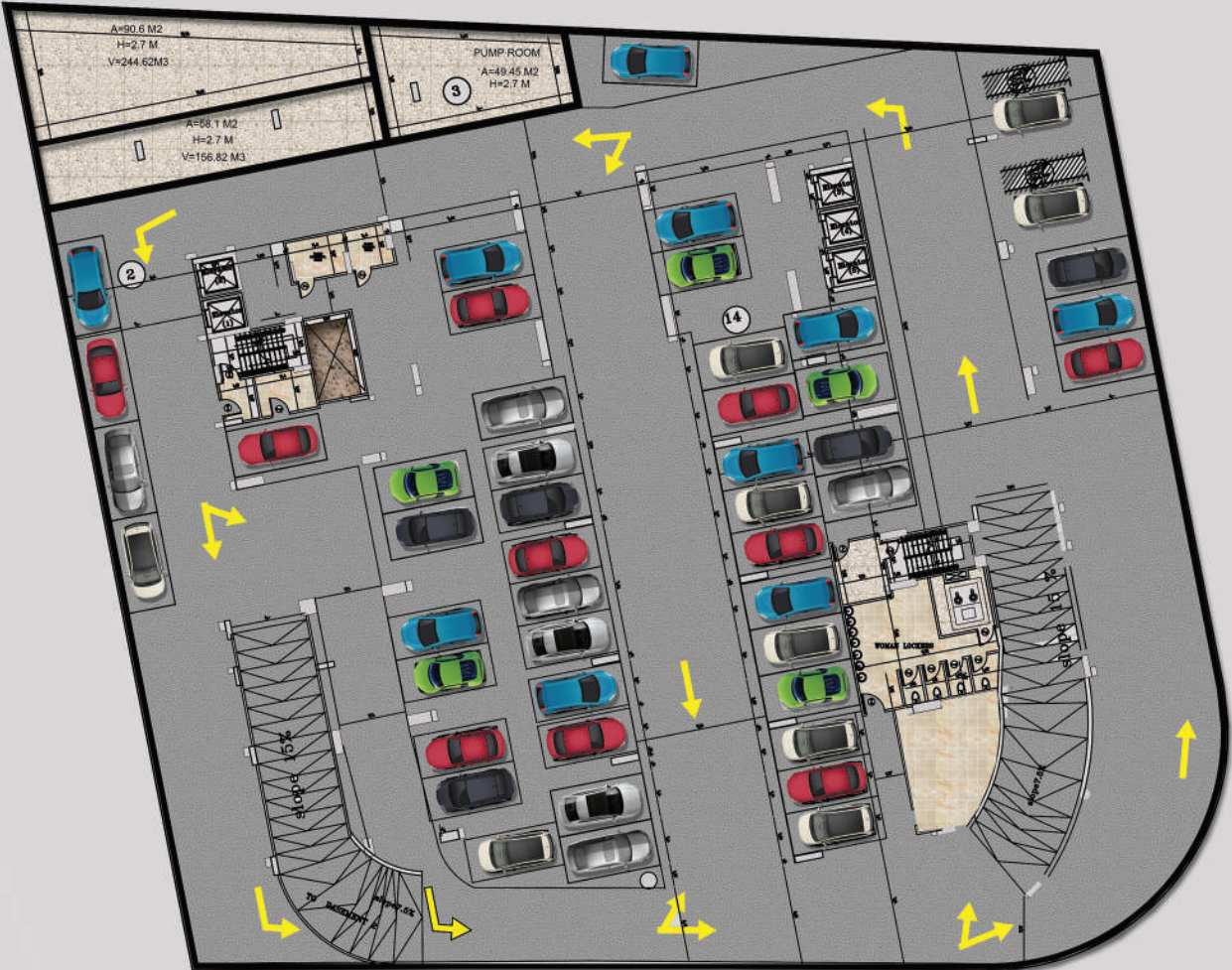
First Basement Plan



Second Basement Plan



Third Basement Plan



Ground Floor Plan





First Floor Plan



SKY LOUNGE



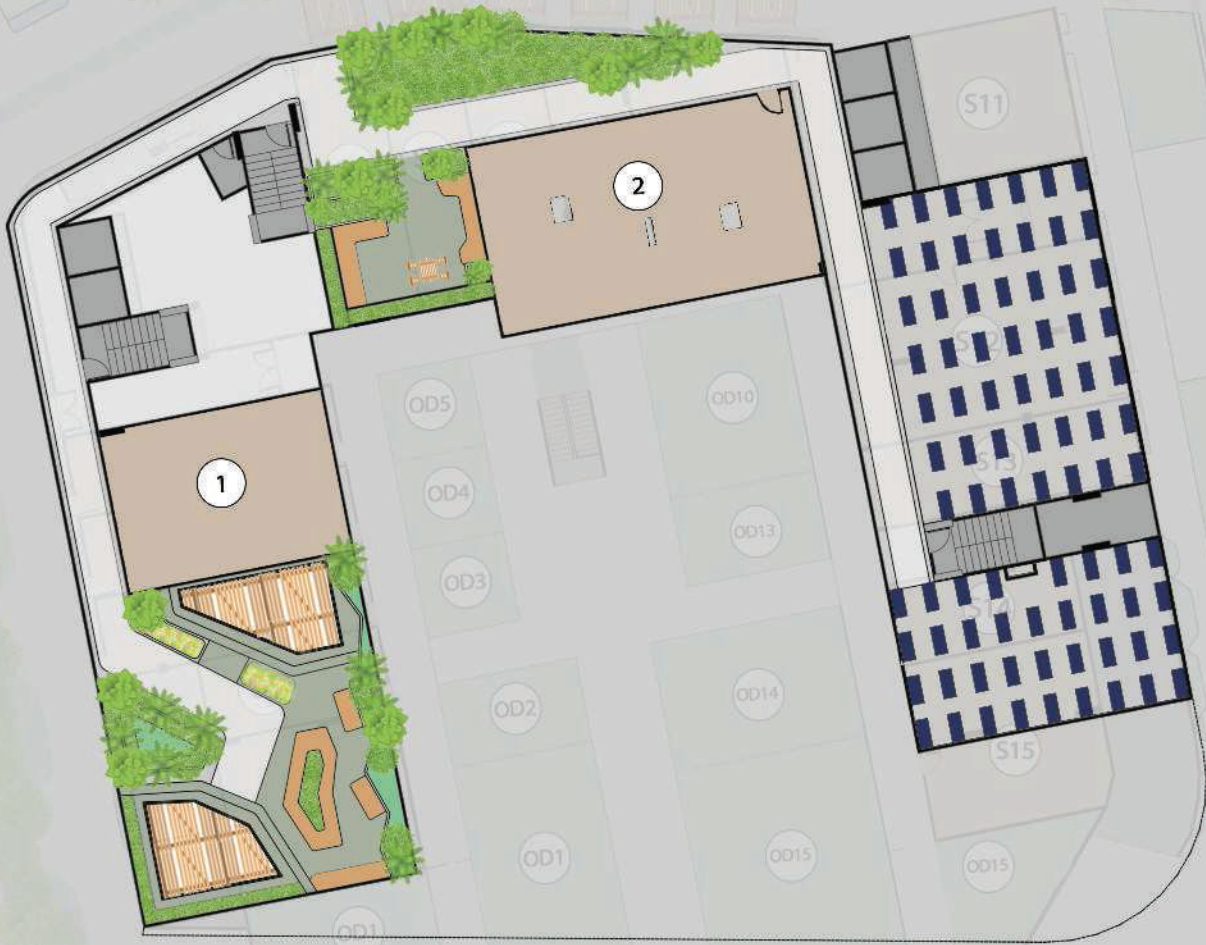
Typical Floor Plan



LANDSCAPE ESCALATOR



Roof landscape plan



1 Club house	62.89 M ²
2 Gym	105.95 M ²

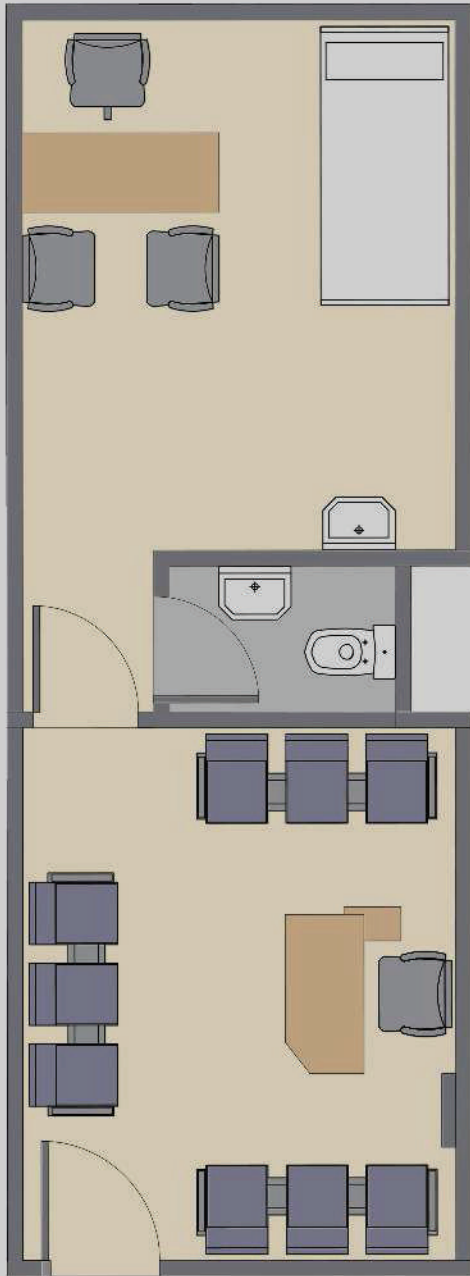


Type A medical unit



- Gross Area 55 M²
- Dr Room 4.20x3.40
- Dr Bathroom 1.95x1.20
- Waiting Area 4.20x3.40





Type B Administration unit



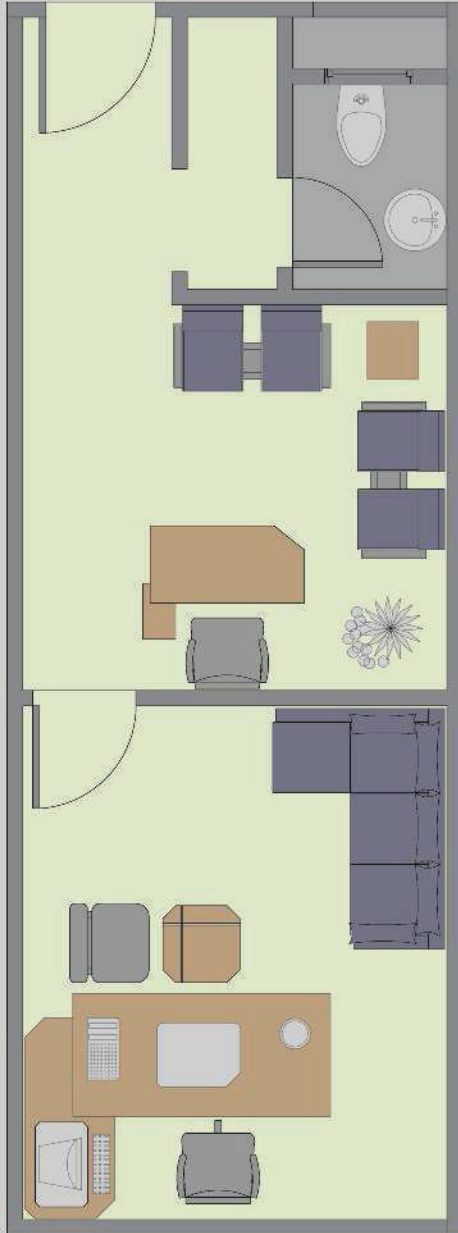
Gross Area 55 M²

Directorroom 4.20x3.40

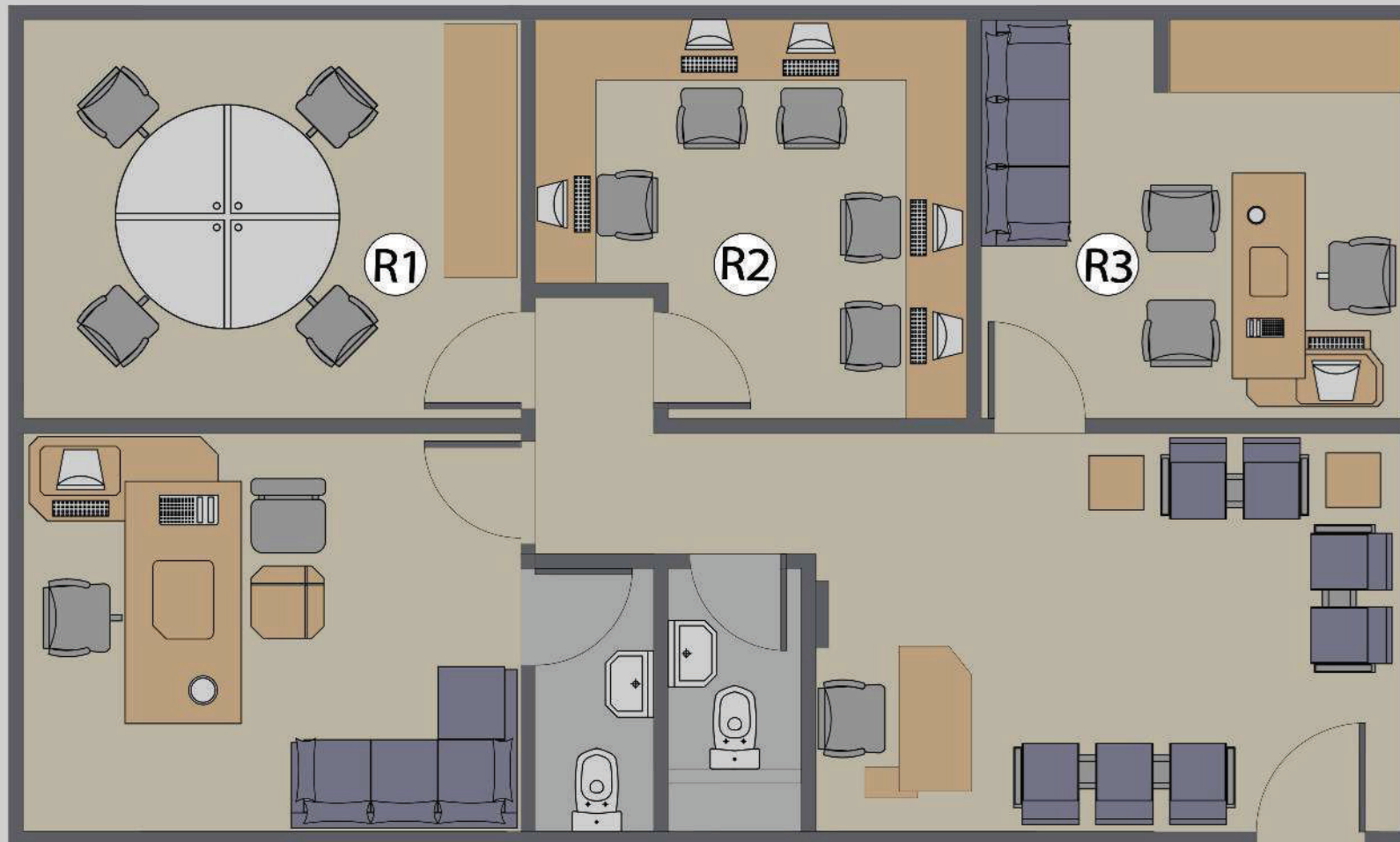
Bathroom 1.70x1.30

Waiting Area 3.40x3.10

kitchen 1.30x0.80



Type C office unit



Room 3 3.65x3.40

Gross Area 136.5 M²

Waiting Area 5.00x3.40

Director Room 4.20x3.40

Visitor Bathroom 1.70x1.30

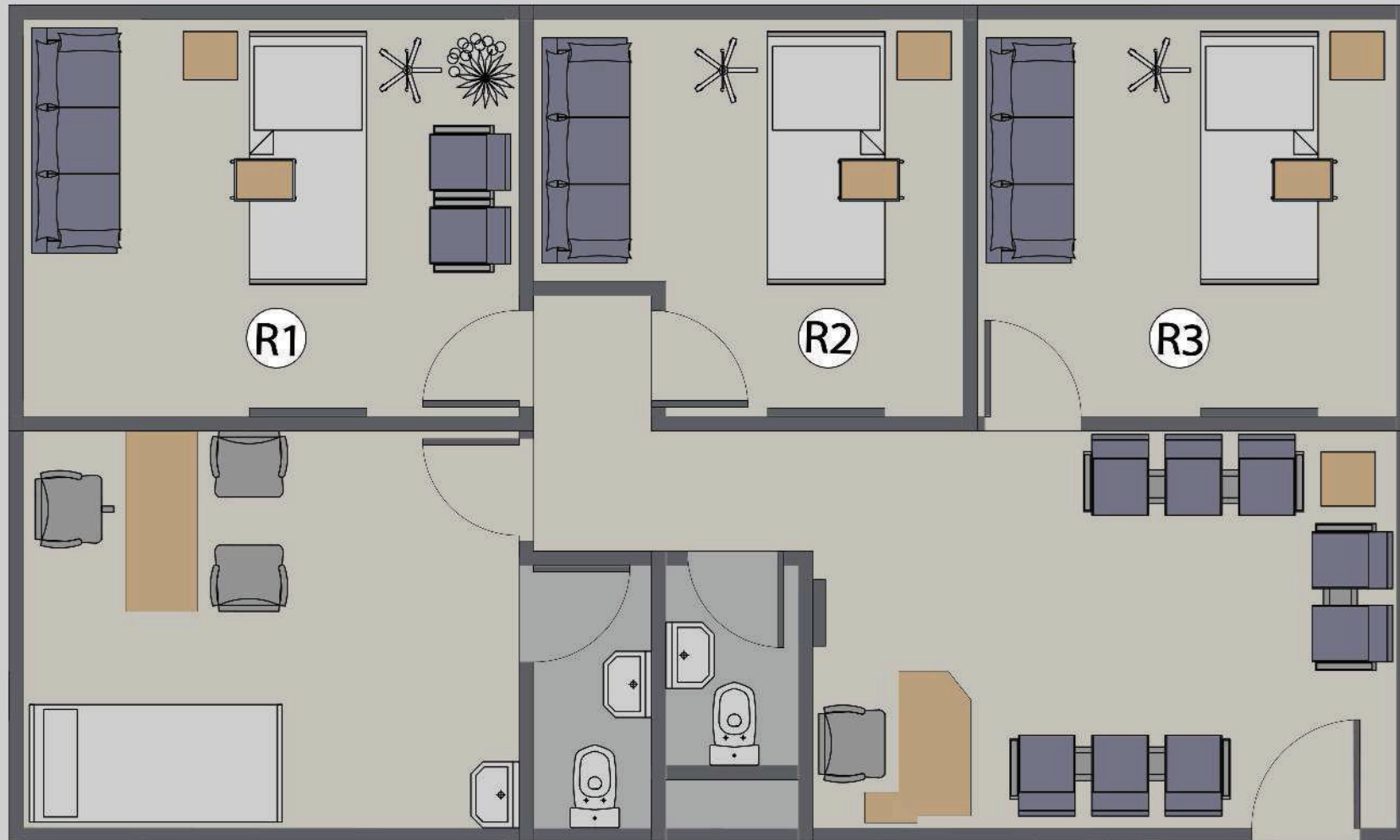
Bathroom 2.30x1.20

Room 1 4.20x3.40

Room 2 3.80x3.40



Type C medical unit



Room 3 3.65x3.40

Gross Area 136.5 M²

Waiting Area 5.00x3.40

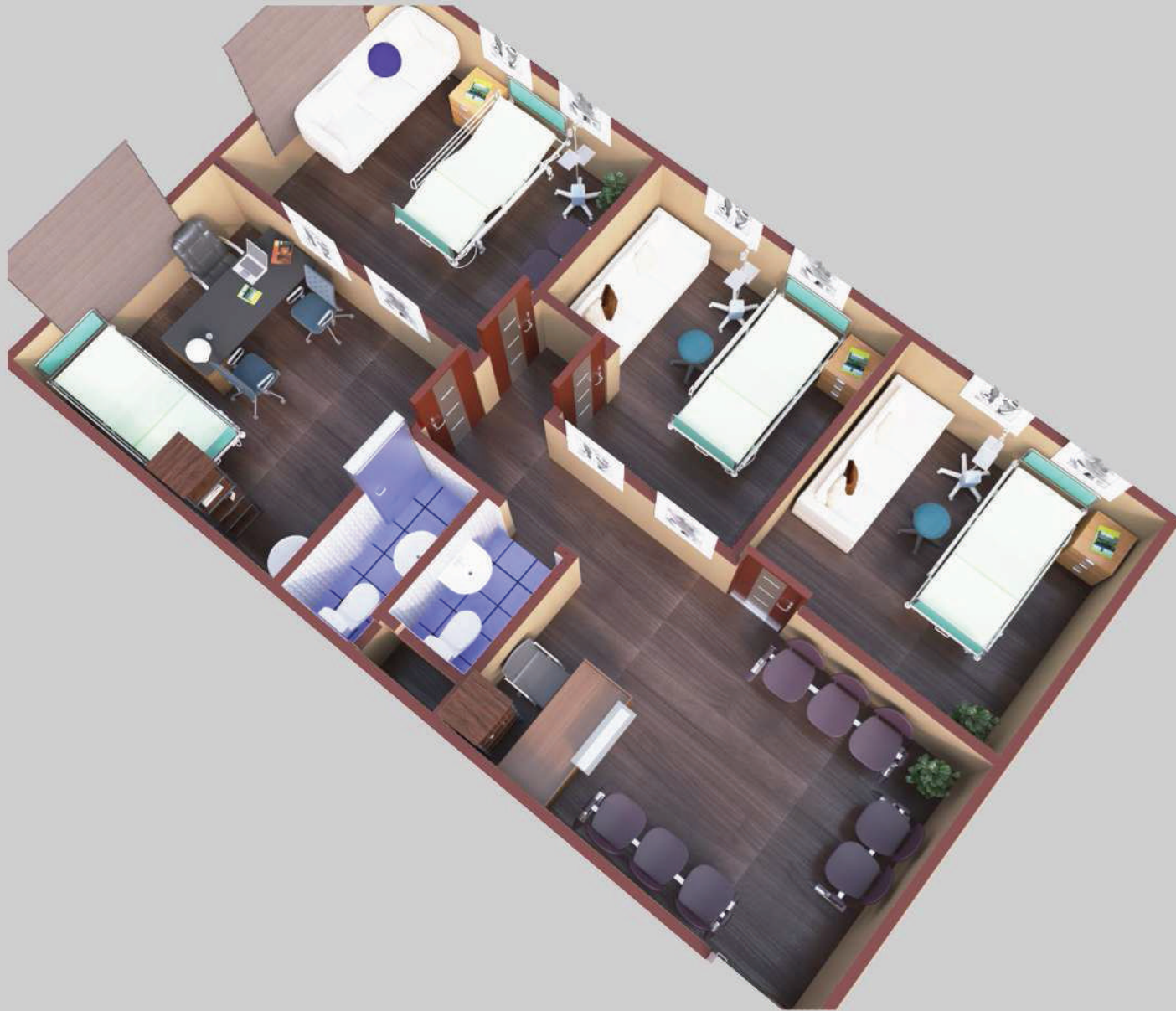
Dr Room 4.20x3.40

Vistor Bathroom 1.70x1.30

Bathroom 2.30x1.20

Room 1 4.20x3.40

Room 2 3.80x3.40





Project Facilities



Solar
cells



Electronic
gates



ATM
Center



Parking
garage



Elevators
escalators



24\7
security



Wi-Fi



Fire
fighting



maintenance
services





Fire
alarms



Central air
conditioning



Sky
lounge



Outdoor
plaza



Mall
management



units are
fully finished



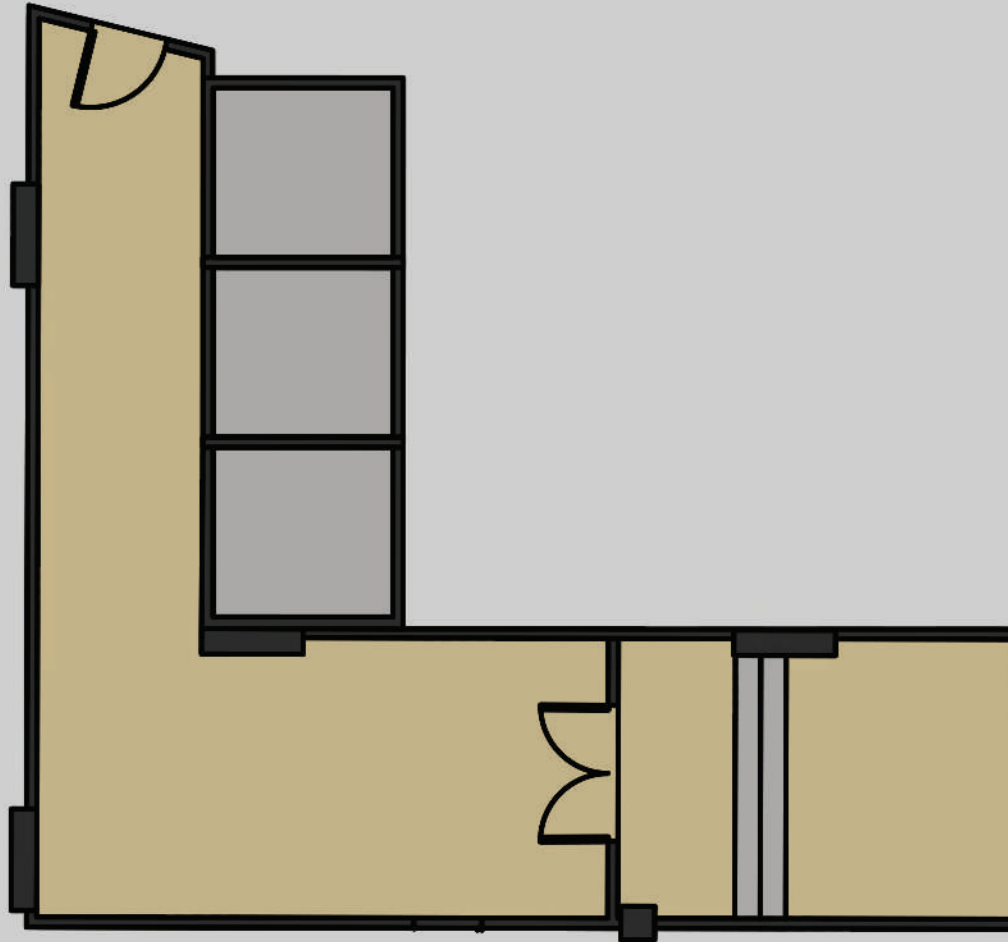
General
satellite



Internal and
external finishes



Multiple
entrance



Entrances

- G3 has five separate entrances "2 for administrative & 3 for medical
- Marble cladding for walls



YOU ARE OUR MISSION

